



---

## Bathing establishment Fact Sheet

Bathhouse name	Gabbiano
Address	Via Isola Clodia
City	Castiglione della Pescaia (Gr)
Contacts	Tel +39 0564382709
Website	<a href="http://www.bagno-il-gabbiano.business.site">www.bagno-il-gabbiano.business.site</a>

**TESTED BY:** [Handy Superabile - Social Promotion Association](#) in summer 2023

**Please note** The following information refers to the verification date shown at the bottom of each card. **The Association** is not responsible for any significant changes made by the property after the visit.

### Summary

Bathing establishment Fact Sheet.....	1
Arrival at the facility .....	2
Private/public parking.....	2
Pathway from the parking lot to the main entrance .....	2
Reception .....	3
Bar/restaurant .....	4
Internal Pathways and common services .....	6
Internal Pathways.....	6
Toilet and shower accessible to guests with reduced mobility.....	7
Changing room.....	9
Beach.....	10
Children's play area.....	11
Swimming pool.....	11
Doctors' Offices/Healthcare Facilities .....	11

---



Project carried out with the contribution of the





## Arrival at the facility

### Private/public parking





Presence of private parking	NO
Presence of parking space reserved for people with disabilities	YES
Type of parking surface	ASPHALT
Public parking nearby	YES
	

### Pathway from the parking lot to the main entrance

Route from the parking lot to the promenade	via 2 ramps: the first length 800 cm, width 140 cm, gradient 7.2%; second length 800 cm, width 140 cm, gradient 7.7 %
Pathway from the car park to the entrance	By ramp: length 168, width 91, slope 25.8%
There are markers and tactile maps	NO





Usable door/entrance width	more than 90 cm
	
	

**Reception**

Umbrella booking system	<input type="checkbox"/> Via web <input checked="" type="checkbox"/> By phone <input checked="" type="checkbox"/> On-site
Presence of multilingual staff	YES





Presence of plant plan with key to services available	NO
Presence of visuo-tactile map	NO
Bulletin board/information panels at an average height of 130 cm in a well-lit area and font size at least 14 dpi with a contrast ratio greater than 4.5:1	NO
The staff attended training courses on welcoming people with different disabilities	NO

### Bar/restaurant

Type of venue	Bar/restaurant
Access to the local bar	Flat
Access to the veranda tables	By ramp 240 cm long, 91 cm wide, slope 24.9%
Usable door/entrance width	more than 90 cm
Bar counter	height greater than 100 cm
Types of tables	4- legged
Space underneath the tables from the floor	70 cm
Multilingual menu	YES
Menus with large print fonts	NO
Braille menu	NO
Table service for people with disabilities	YES
Availability of gluten-free food	<input checked="" type="checkbox"/> bread <input checked="" type="checkbox"/> pasta <input type="checkbox"/> biscuits <input checked="" type="checkbox"/> ice cream <input checked="" type="checkbox"/> Pre-packaged foods



Project promoted by



Regione Toscana



Project carried out with the contribution of the

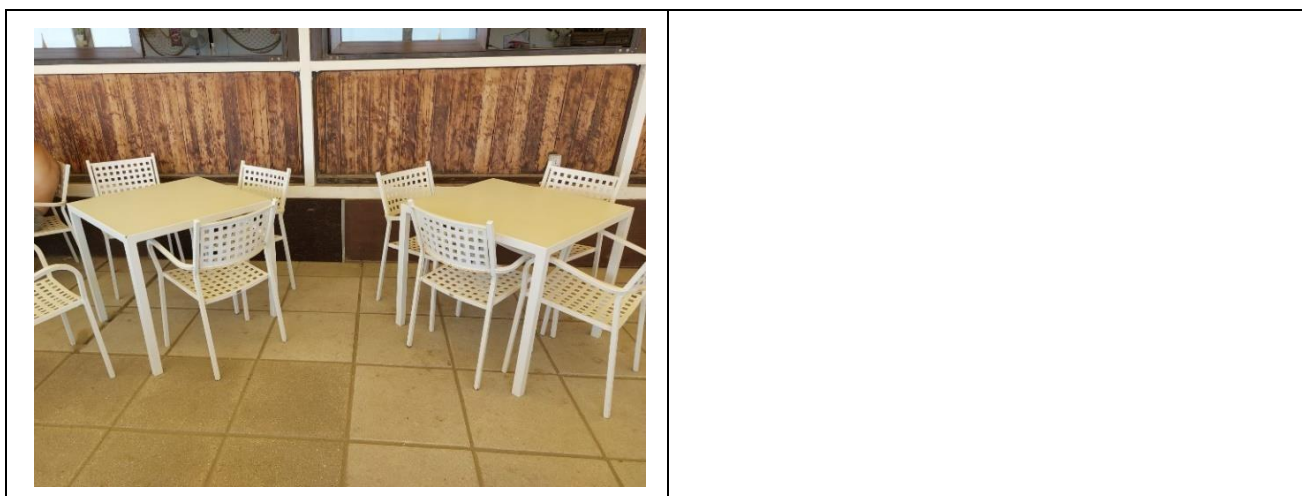


Presidenza del  
Consiglio dei Ministri  
Ministro per la disabilità

Project promoted by



Regione Toscana

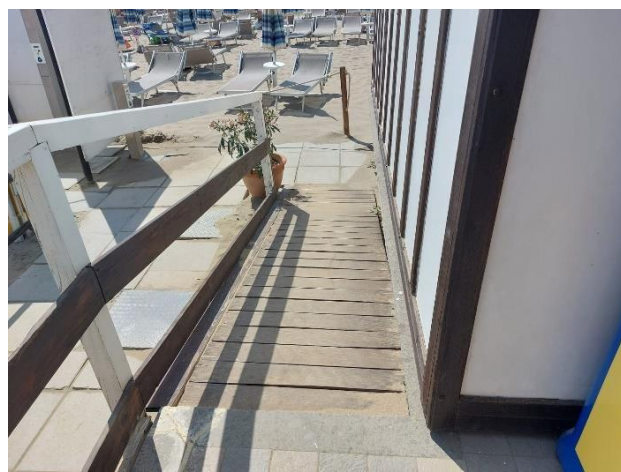


## Internal Pathways and common services

### Internal Pathways

Indicate whether the pathways connecting the entrance to the beach are flat or with ramps in addition to those already described

flat paths with a ramp 366 cm long and 90 cm wide with a gradient of 15.8 %





Project carried out with the contribution of the



Presidenza del  
Consiglio dei Ministri  
Ministro per la disabilità



**Toilet and shower accessible to guests with reduced mobility**

Number <b>of toilets</b> accessible/usable by guests with reduced mobility	1
Access to the premises	via ramp length 220 cm, width 101 cm, gradient 18.5 %
Usable width of the entrance door	more than 90 cm
Toilet height	50 cm
Open front toilet seat	YES
Support handles	to the left of the toilet
Flexible hand shower at the side of the toilet	NO
Free space on the sides of the toilet	left 25 cm right more than 90 cm frontal more than 90 cm
Electric doorbell/phone	YES
Washbasin with space underneath for wheelchair	70 cm
Height from the ground on the bottom edge of the mirror	Sufficient for use by wheelchair users
Baby changing table	NO
	





<p>Accessible <b>shower</b> available for guests with reduced mobility</p>	<p>SI separated from the toilet room</p>
<p>Access to the shower room if separated from the toilet room</p>	<p>Flat</p>
<p>Useful width of the door/entrance gate if separated from the toilet room</p>	<p>more than 90 cm</p>
<p>Shower type</p>	<p>open-type</p>
<p>Floor-level shower</p>	<p>YES</p>
<p>Shower chair</p>	<p>missing</p>
<p>Grab bar</p>	<p>YES</p>
<p>Presence of shower head or ups and downs</p>	<p>fixed shower head</p>
<p>Electric doorbell/phone</p>	<p>NO</p>



Project promoted by



Regione Toscana



### Changing room

Accessible changing room available for guests with reduced mobility	YES
Access to the premises	via ramp length 220 cm, width 101 cm, gradient 18.5 %
Usable door/entrance width	Cm 80
Size of the dressing room	sufficient for wheelchair manoeuvring
Presence of a cot	NO
Coat rack height from the ground	Missing coat rack

Project carried out with the contribution of the



Presidenza del  
Consiglio dei Ministri  
Ministro per la disabilità



## Beach

Type of beach	sand
Access to the beach	by ramp length 366 cm, width 90 cm, gradient 15.8 %
Walkway to reach the umbrellas	YES
Type of walkway	PVC
Walkway width	100 cm





Removable Platform between the walkway and the umbrella station to facilitate the passage and parking wheelchair	YES
Amphibious beach chair available for helping people with reduced mobility to enjoy swimming (owned by the establishment or by association)	YES

### Children's play area

Children's play area	Not detected
----------------------	--------------

### Swimming pool

The property has a swimming pool	NO
----------------------------------	----

### Doctors' Offices/Healthcare Facilities

Hospitals near the facility	<b>Ospedale Misericordia</b> via Senese, 161 Grosseto at 25 km
Other Healthcare Facilities	<b>Presidio socio sanitario ASL</b> via Roma 1, Castiglione della Pescaia, tel 056443921 - 0564/43921 – 0564/483080 <b>Dialysis service on holiday</b> at Ospedale Misericordia Grosseto U.O. Nephrology and Dialysis Tel. 0564 485.218

TESTED BY: **Handy Superabile Social Promotion Association in summer 2023**

